

NERC

NORTH AMERICAN ELECTRIC
RELIABILITY CORPORATION

Item 1a

NERC's Stakeholder Model

Sonia Rocha, SVP, General Counsel, and Corporate Secretary
MRC Informational Session
July 28, 2023

RELIABILITY | RESILIENCE | SECURITY





Membership

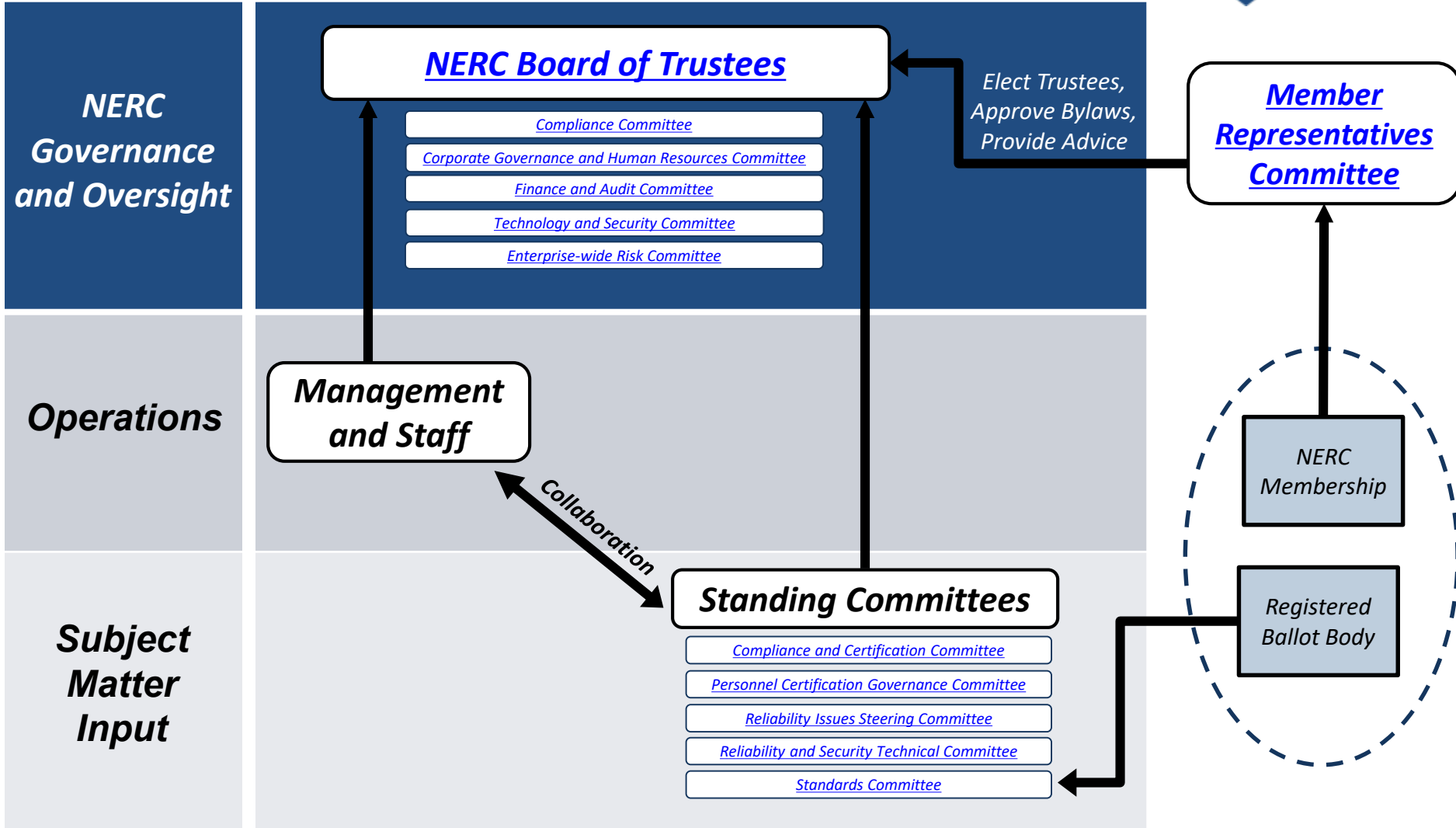
- Voluntary
- Elects members to Member Representatives Committee
- Elects members to standing committees

Registered Ballot Body

- Voluntary
- Votes on standards
- Votes for Standards Committee representatives

NERC Compliance Registry

- Mandatory for entities with responsibilities for compliance with mandatory and enforceable standards



Membership

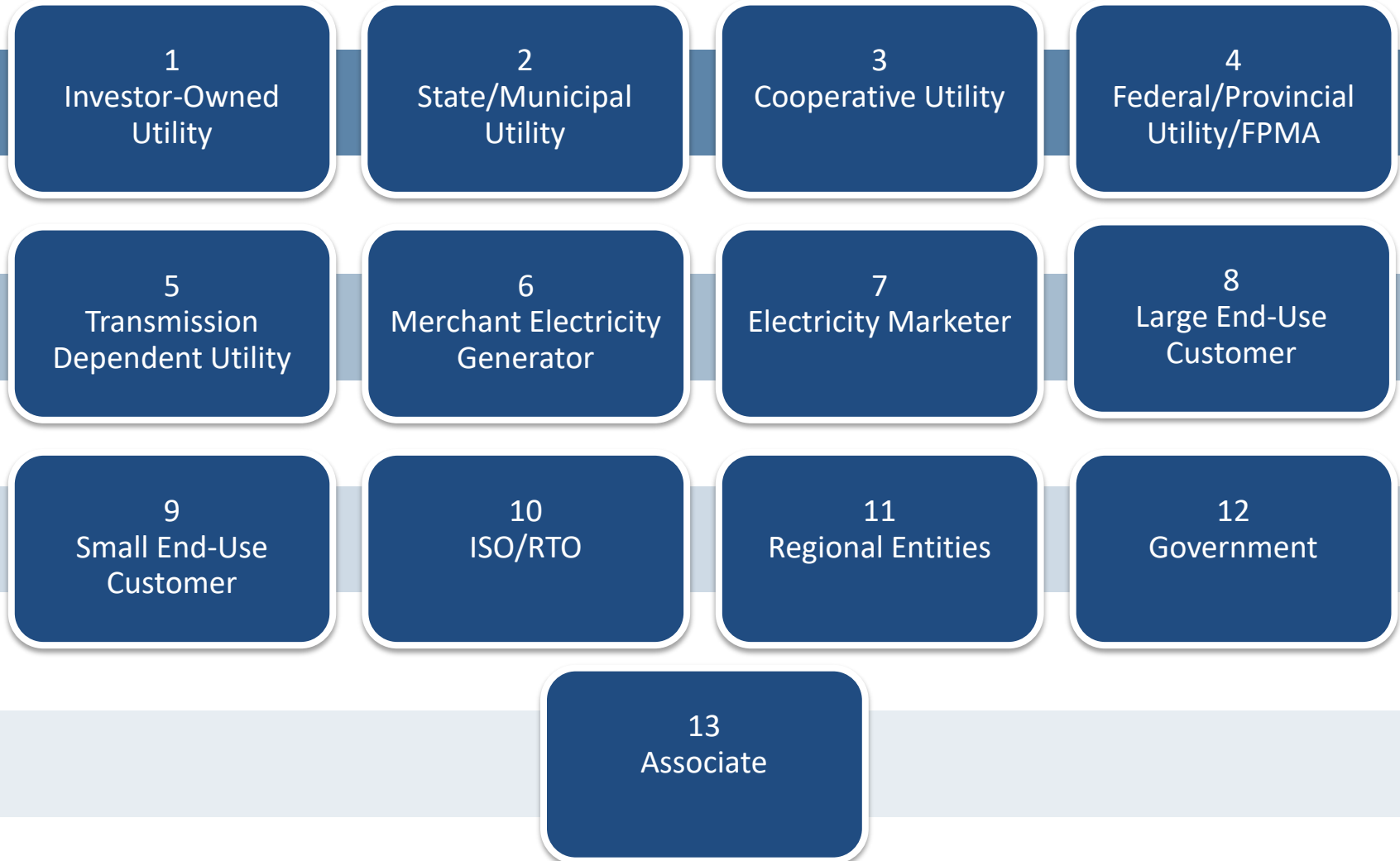
- Voluntary
- Elects members to Member Representatives Committee
- Elects members to standing committees

Registered Ballot Body

- Voluntary
- Votes on standards
- Votes for Standards Committee representatives

NERC Compliance Registry

- Mandatory for entities with responsibilities for compliance with mandatory and enforceable standards



Membership

- Voluntary
- Elects members to Member Representatives Committee
- Elects members to standing committees

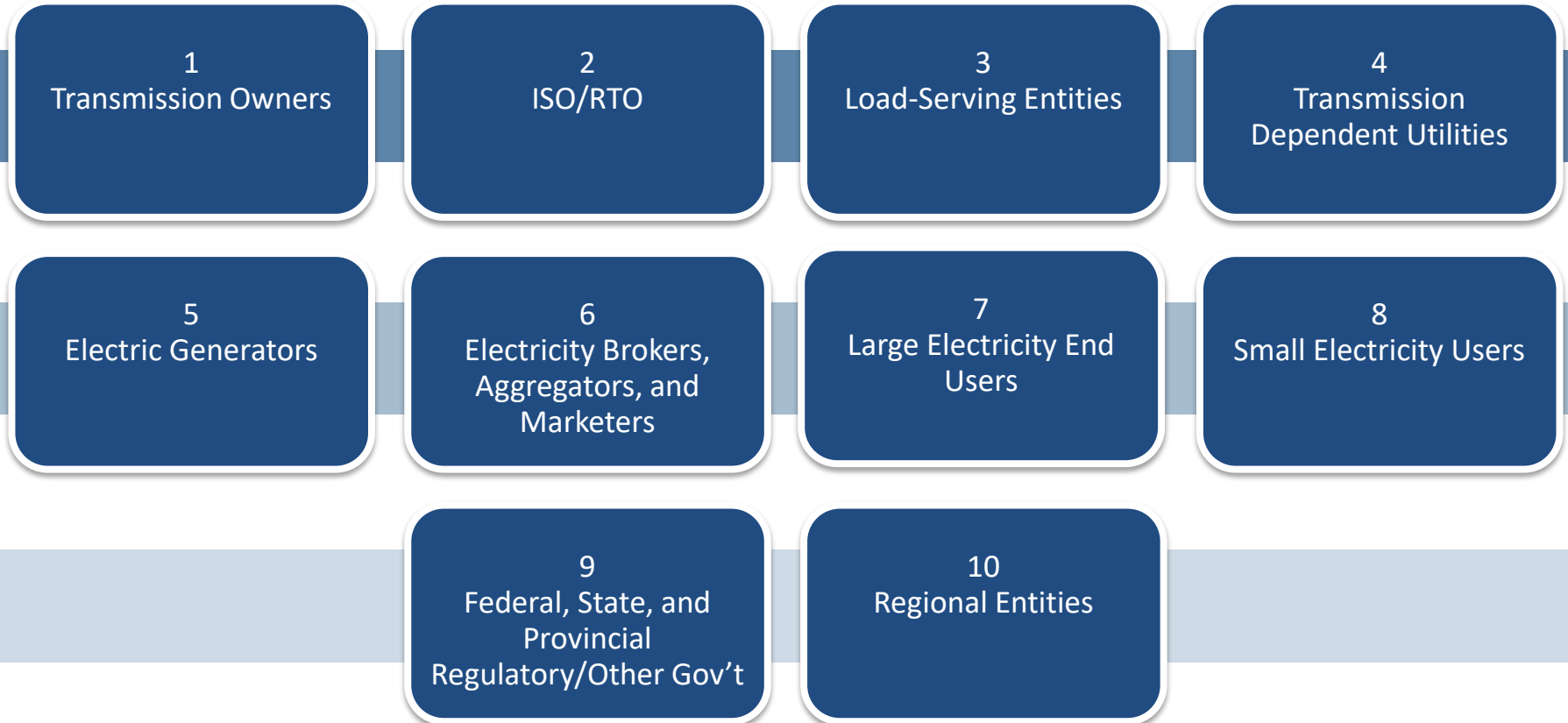
Registered Ballot Body

- Voluntary
- Votes on standards
- Votes for Standards Committee representatives

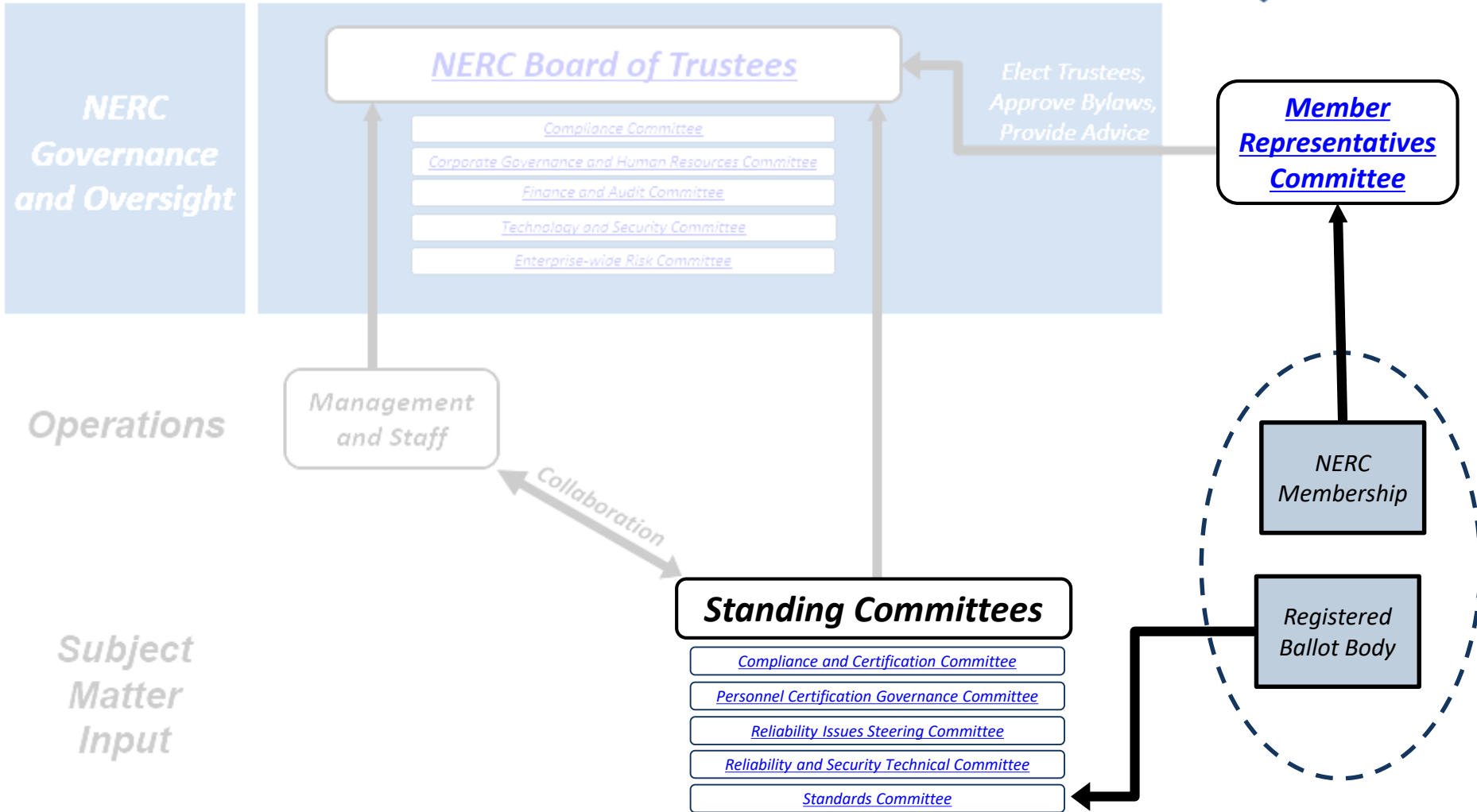
NERC Compliance Registry

- Mandatory for entities with responsibilities for compliance with mandatory and enforceable standards

Registered Ballot Body Segments



Membership Sectors	RBB Segments
Defined in Bylaws	Defined in Rules of Procedure
13 sectors, reflects industry ownership/organization structures	10 segments, reflects activities/roles on the modern BPS
Vote on matters involving NERC's governance	Vote on draft Reliability Standards
1 NERC membership per entity (any qualified Sector)	1 RBB membership per qualifying segment per entity
Designed to allow all members to have a voice in NERC's governance	Designed to provide for fairness, balance, and lack of dominance in standards voting
Governance-related issues/perspectives more likely to be shared by entities with the same organizational structure	Standards-related issues/perspectives more likely to be shared by entities performing same functional responsibilities



- **Join NERC as a Member**

- Complete Membership Application on [ERO Portal](#)
- More information: <https://www.nerc.com/gov/Pages/Members.aspx>
- Questions: nercmembership@nerc.net

- **Join the Registered Ballot Body**

- Complete application on SBS ([SBS Tutorial](#))
- More information: <https://www.nerc.com/pa/Stand/Pages/Balloting.aspx>
- Questions: ballotadmin@nerc.net

- **Observe a Committee**

- Committees: <https://www.nerc.com/comm/Pages/default.aspx>
- Nerc.com Calendar <https://www.nerc.com/Pages/Calendar.aspx>

A stylized map of North America is shown in a light blue color. A dark blue horizontal band runs across the middle of the map, partially overlapping the text. The text "Questions and Answers" is centered within this band.

Questions and Answers